



VELOX[®]

Develops Opportunities For Enterprises...

www.velox.co.in | www.veloxtech.us

INDIA | USA | DUBAI | NEPAL | ZIMBABWE

SecureIT- Network Monitoring System



One Point Solution for Monitoring your Entire IT Networks

Network Monitoring System (NMS) is a part of our SecureIT suite which focuses in monitoring and securing an organization's network devices. SecureIT- NMS is commonly known for its advanced infrastructure management capabilities. All **Devices, Systems, Traffic, and Applications** in the network can be easily displayed in a hierarchical view that summarizes performance and alerts.

Visualizing your entire IT infrastructure with further classifications based on type or logical groups. With NMS you can monitor, control, deploy and allocate any type of data that are supposed to be transmitted to different units/systems in a network.

Automatic configuration of devices and interfaces with predefined templates. We can also Implement advanced network performance monitoring techniques to quickly resolve network faults by doing Root cause analysis . Get advanced reporting features with provision to schedule and automatically email or publish the reports.

SecureIT Solution Delivering End-to-End Unified Network Monitoring System

SecureIT Network Monitoring Solution (Infrastructure Intelligence Platform - IIP) proactively monitors & optimizes all network devices, servers and applications across IT infrastructure to manage network for fault and performance for maximum uptime.

The platform collects, discovers and indexes data from multiple sources including databases, webservers, containers, virtualizations, URL, cloud services, middleware etc. The platform is built for every member of the IT team to monitor, track, and deliver uninterrupted business service. It enables its users to search, visualize & analyse the data on various critical metrics with the help of customizable dashboards and widgets to extract powerful operational intelligence. SecureIT uses unique data model to cut through data flood and quickly detect what matters most to run IT more effectively.

FEATURES

- Network Monitoring Modules
- Switch/ Router Monitoring
- Firewall Monitoring
- Wireless Controller Monitoring
- Access Points Monitoring
- VSAT Monitoring
- Netflow Monitoring
- VoIP Monitoring
- Syslog Monitoring
- Router Backup & Restoration
- BGP Routing Table Monitoring
- Network Topology
- Network Interface Management
- Link+ Router+ Switch Monitoring
- Router + Switch + Firewall + Device Monitoring

BENEFITS



Performance and availability



Comprehensive & user-friendly alerts & notifications



Central firmware management with topology-based rollout



Suitable for use in all industries



Monitor multiple locations with a single installation



Comprehensive management for large & complex networks



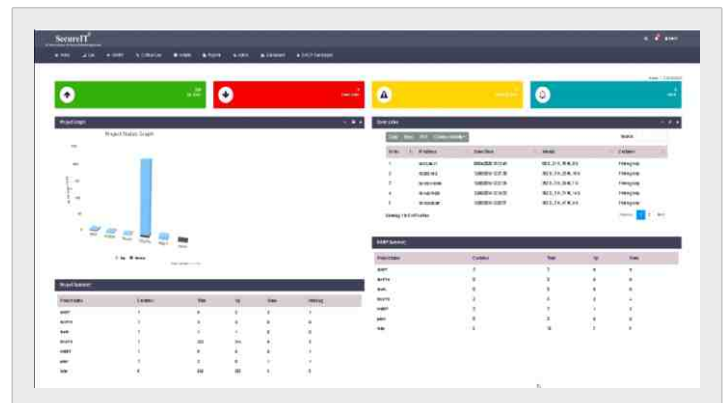
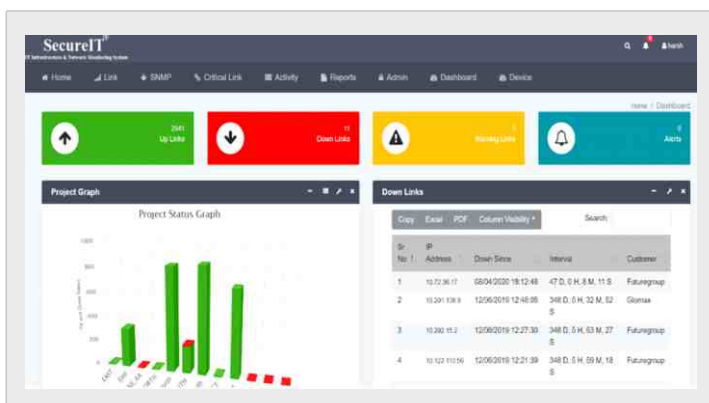
ICMP & SNMP based monitoring



Smart setup and auto-discovery for a quick start



Custom dashboards/maps for a high-level overview

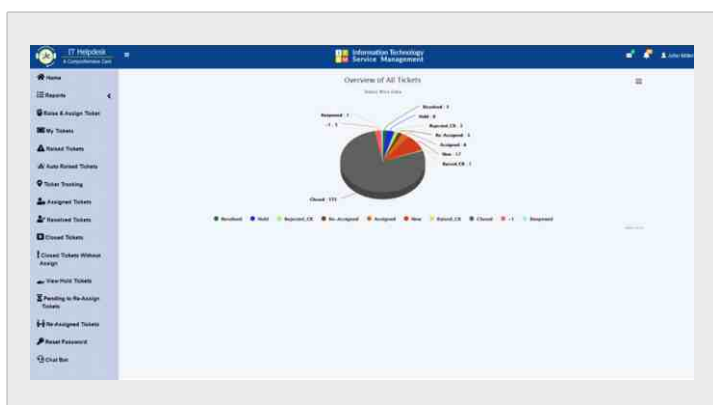


BENEFITS

- Minimize Risk & Impact due to IT mis-management
- Improve Technician Productivity
- Contextual view of Service Desk for IT Team
- Analyse IT trends and automate workflows
- Reduce the number of recurring issues
- Reliable Service Desk Operation
- Meet Service Level Agreements & IT Compliance
- Provide users with mobile access to services
- Customise services and processes to the needs of your organisation
- Avoid solution churn, by adopting a truly flexible solution that will meet your future needs
- Customise services and processes to the needs of your organisation
- Customise services and processes to the needs of your organisation
- Eases audit process

FEATURES

- Incident Management.
- Problem Management.
- Change Management
- Release Management.
- Request Management.
- Asset Management.
- Service Catalogue
- Knowledge Management
- Configuration Management Database



SecureIT- Information Technology Asset Management (ITAM)



The Most Efficient & Effective SecureIT- ITAM simplifies the use of Assets in the Organization

Velox ITAM Platform is designed to automate workflows, approval matrix, notifications, ticket based CMDB updating, RPA & ML capabilities to avoid human efforts. Velox ITAM Platform delivers proactive & predictive analysis, cost & risk optimization, CXO Dashboards and financial discipline across ITAM process. ITAM Platform addresses all Opportunities and deliver expected Solutions to help organization move upwards on Maturity Growth Model. Velox ITAM platform integration is extremely automated with almost all the ITSM platforms available in the industry. Two-way communication between Velox ITAM and any other industry ITSM platform, makes it real time reporting platform. RPA, AI, & ML capabilities brings high productivity & efficiency to ITAM processes & C-SAT.



Hardware Management



Software Management



Contracts Management



Vendor Management



Dashboard Management



Workflow Management

SecureIT- ITAM A Complete Solution

Asset life cycle management include IT asset tracking, location, IP, MAC ID of the assets. Configuration Management Database also includes tracking of AMC, Warranties, Software Asset Management, Reporting and Dashboards.

Generally, in ITAM there are two types of assets that are monitored and managed.

IP Based: IP Address based devices can be discovered from IP range, all discovered devices can be also additionally discovered for their licenses of installed application, which includes standard and 3rd party applications. These licenses can be auto discovered only if they are

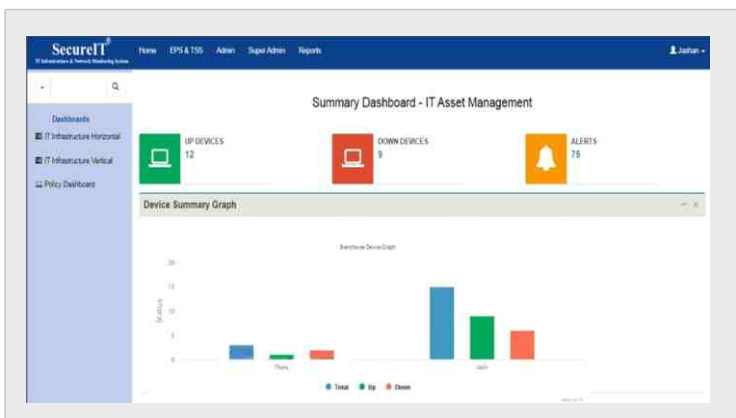
configured for monitoring from ITSM Portal.

Non-IP Based: For Non-IP based devices there are specific template which will be provided from the OEM (Velox) wherein they have to fill in the template to do an bulk upload of the same.

Automatically discover all assets (H/W & S/W), Control & Track where & how software products are being utilized, Optimize the profit generated by assets throughout their lifecycle, Easily Track and Manage Purchasing Information, Get Notified When Contracts are Expiring, Allocate Assets and Costs

FEATURES

- * Hardware Management
- * Software Management
- * Contract Management
- * Vendor Management
- * Dashboard Management
- * Workflow Management
- * Unused Assets
- * Suspicious User Login
- * Geo-Tagging
- * Compliance Report
- * Antivirus Status
- * Admin Access Control Status
- * Unexpected Shutdowns
- * Current System Status



S/N	Device Name	Device IP	Model	Version	Serial Number	Mac ID	Exp Time
1	W_9052-OF-CP-001-www.falgroup.in	19.202.4.12	C2900e Software (C2900e-UNIVERSAL) (M)	Version 15.2(2)E3	349000331	00:AD:D9:08:13:15	100 days, 25:52:28.73
2	W_9052-OF-CP-001-www.falgroup.in	19.202.15.2	C2900e Software (C2900e-UNIVERSAL) (M)	Version 15.4(2)M4	A24000322	00:AD:F8:14:4B:10	80 days, 15:52:56.36
3	SBICAFM-3750D-CORE-ibm.com	172.16.52.1	C2700e Software (C2700e-UNIVERSAL) (M)	Version 15.0(2)SE10a	588700041	00:AD:D9:14:87:45	172 days, 20:38:43.95
4	SBICAF-DC-4321-1-VMW-SBICAF	192.168.0	IP Software (IP68_64_LAN_IP_V00D-UNIVERSAL) (M)	Version 15.5(2)04b	806300133	00:AD:08:17:08:34	255 days, 2:52:35.71
5	SBICAF-DC-4321-Admin-MPLS-SBICAF	192.168.0.159	IP Software (IP68_64_LAN_IP_V00D-UNIVERSAL) (M)	Version 15.5(2)04b	A12000435	00:AD:08:17:08:34	236 days, 19:42:38.21
6	SBICAF-DC-4423-Admin-MPLS-SBICAF	192.168.0.25	C2900e Software (C2900e-UNIVERSAL) (M)	Version 15.2(2)E3	349000324	00:AD:08:14:4B:10	155 days, 8:52:55.31
7	W_1004-48F1X-H091	192.168.0.1	C2900e Software (C2900e-UNIVERSAL) (M)	Version 15.4(2)M4	245420263	00:AD:C7:14:D8:22	161 days, 20:32:52.64
8	Admin-MPLS-SBICAF	192.168.0.4	IP Software (IP68_64_LAN_IP_V00D-UNIVERSAL) (M)	Version 15.5(2)04b	AC0701497	00:AD:F8:14:4B:10	122 days, 15:52:56.36
9	W_9052-OF-CP-001-www.falgroup.in	19.202.4.11	C2900e Software (C2900e-UNIVERSAL) (M)	Version 15.2(2)E3	787342965	00:AD:08:15:CA:28	100 days, 15:50:45.48
10	W_9052-OF-CP-001-www.falgroup.in	19.202.15.1	C2900e Software (C2900e-UNIVERSAL) (M)	Version 15.4(2)M4	787813085	00:AD:C8:14:CE:29	44 days, 22:04:08.18

SecureIT- Patch Management



Patch Management at a Glance

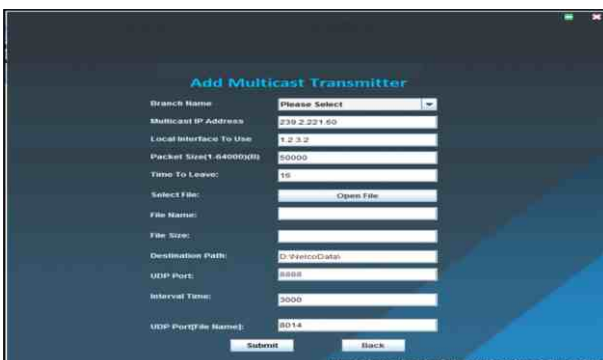
Patch management gives you the when, where, what and how of security patching. It tells you when a software vulnerability with an available patch is threatening your infrastructure, where it will have the most critical impact, what the right remediation strategy is and how to deploy it. SecureIT Patch Management search continuously verifies vulnerabilities and the effectiveness of the patches published by the vendors. This intelligence is then matched to your infrastructure, making it possible to prioritize, plan and execute workflows, and document your risk reduction efforts.

Patch Management solution which helps IT administrators keep away vulnerabilities and malware by applying patches of Windows, Mac, Linux and third-party applications in time.

Patch Management is encrypted (DES -3, AES 256 bit key), Patch Management file transfer program, designed to securely, reliably and efficiently transfer files to multiple receivers simultaneously. It is useful for distributing large files to large number of receivers and makes data distribution highly efficient over any network including satellite links (with two way communication) and the inherent delay makes any TCP based communication highly optimized. The multicast encryption system is based on TLS with extensions to allow multiple receivers to share a common key. It has the capability to communicate over discrete networks.

HIGHLIGHTS

- Automate patch management - especially for security updates
- Use a 'Critical updates first' approach
- Server patch management best practice: periodically scan and update
- Upgrade OSs to their latest versions
- Evaluate patches in a test environment before distributing
- Make it two deployments a week - Schedule auto deployments
- Create more configurations to suit business requirements
- Re-attempt failed patches
- Generate detailed patch summary reports
- Cover patch management in a heterogeneous environment
- Prioritize security patch updates over non-security updates
- Create a separate APD task for critical patch deployment
- Enable agents to download patches directly from trusted vendor sites
- Allow users to skip a deployment to avoid hindrance in the on-going tasks
- Suspend any optional updates, roll-ups and feature pack deployment
- Ensure machines do not run any end-of-life applications
- Use a secure gateway server to secure communication between remote endpoints & the server at your place.



FEATURES

- Automated patch management
- User friendly interface
- Dynamic Monitoring & Reporting
- Achieve compliance
- Cross-platform support
- Customized Deployments Policies
- Third party applications patching
- Flexible deployment policies
- Test & approve patches
- Windows 10 feature update deployment
- Decline patches/applications
- Ensure patch compliance
- Insightful reports

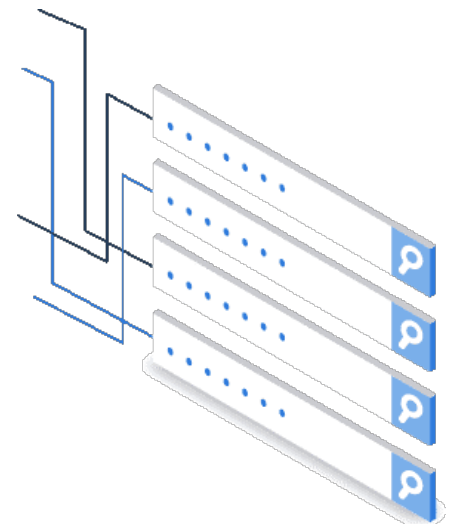
SecureIT- IP Address Management



IP Address Management (IPAM) refers to a method of scanning, planning, tracking and managing the information associated with a network's Internet Protocol address space. With IPAM software, administrators can ensure that the inventory of assignable IP addresses remains current and sufficient. IPAM simplifies and automates the administration of many tasks involved in IP space management, including writing DNS records and configuring DHCP settings. Additional functionality, such as controlling reservations in DHCP as well as other data aggregation and reporting capability, is also common. The IP Address Management tool periodically scans a subnet and provides the availability status of IP addresses in that subnet. One can check whether a particular IP is reserved or available using the IP management system. The IP Address Management tool accepts multiple subnet inputs, which helps in scanning the entire network to get the status of the IP addresses.

FEATURES

- * Active Directory Integration
- * Role Based Administration
- * Hierarchical Tree View
- * IP History and Audit
- * End-to-End IP Details
- * Discovering / Adding Subnets
- * IP Address Management Reports
- * DHCP Server Monitoring
- * Powerful Search
- * IPv4 and IPv6 Address Management

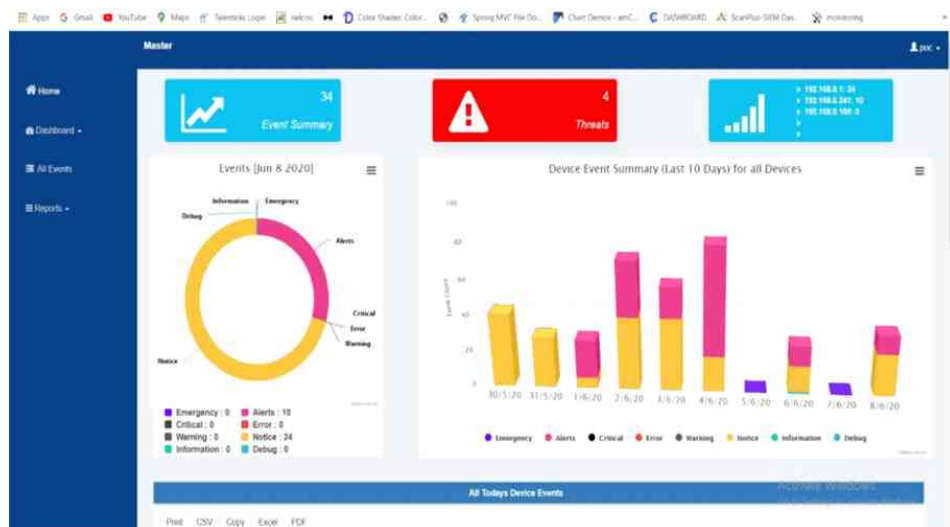
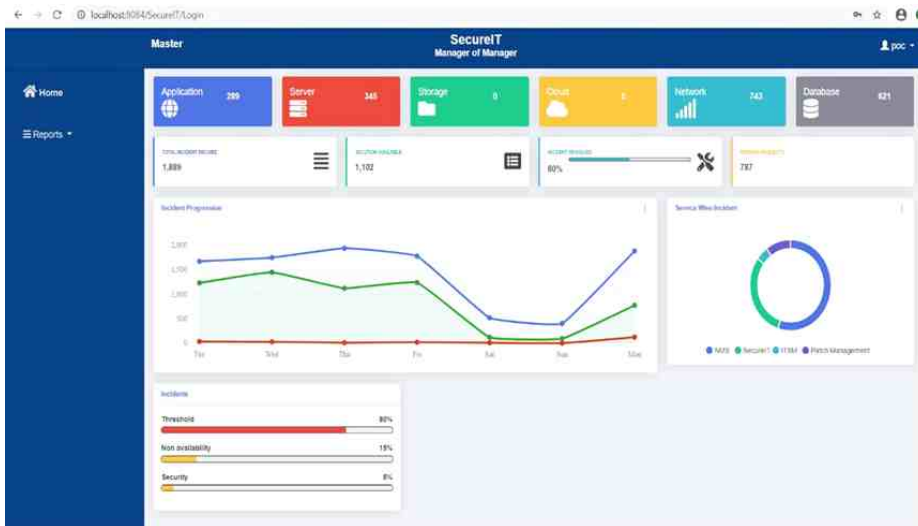
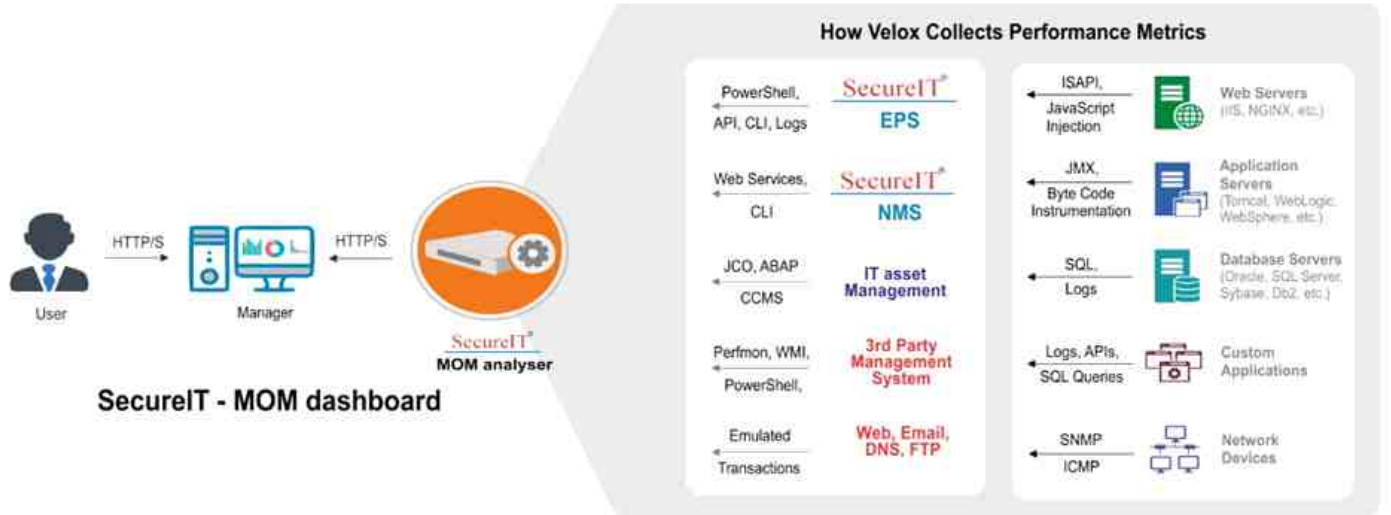


SecureIT- Manager of Manager



The goal for our SecureIT Manager of Managers solution is to have a higher layer management platform that collects, consolidates and correlates IT events and alert information across multiple management systems, devices, services and applications and displays this all in a single-pane-of-glass. The SecureIT Manager of Managers solution implemented in conjunction with SecureIT provides this platform.

- * Gain end-to-end visibility:**
Monitor any of 180+ applications, 10+ operating systems, 10+ virtualization platforms, 20+ storage devices and any SNMP-enabled network device from one web console.
- * Proactively monitor the target infrastructure:**
allows to detect time of day, day of week of abnormalities, and alert administrators to potential problems in advance.
- * Intelligently diagnose problems:**
Leverage built in correlation rules to correlate alerts across tiers and pinpoint the root-cause of problems. Get deep diagnostics and actionable insight needed to troubleshoot issues, right-size the infrastructure and plan for future growth.
- * Automate monitoring and recovery:**
Pre-defined models for each tier enable monitoring to be set up quickly, without needing extensive configuration. When problems occur, recovery actions can be automatically initiated, minimizing mean time to repair
- * Correlation Database:**
As per standard MoM and ITSM configuration, MoM supports pre- defined correlation tool for ITSM, Network Devices, ITAM, and any third-party devices.





901,902,905, 906 & 908, 9th Floor, Vashi Infotech Park,
Plot No.16 Sector No.30 A, Vashi, Navi Mumbai 400705
+91-22-62233070 / +91-22-66738684 | info@velox.co.in